

GMC-JM50 Sealed Magnetic Catch

Features

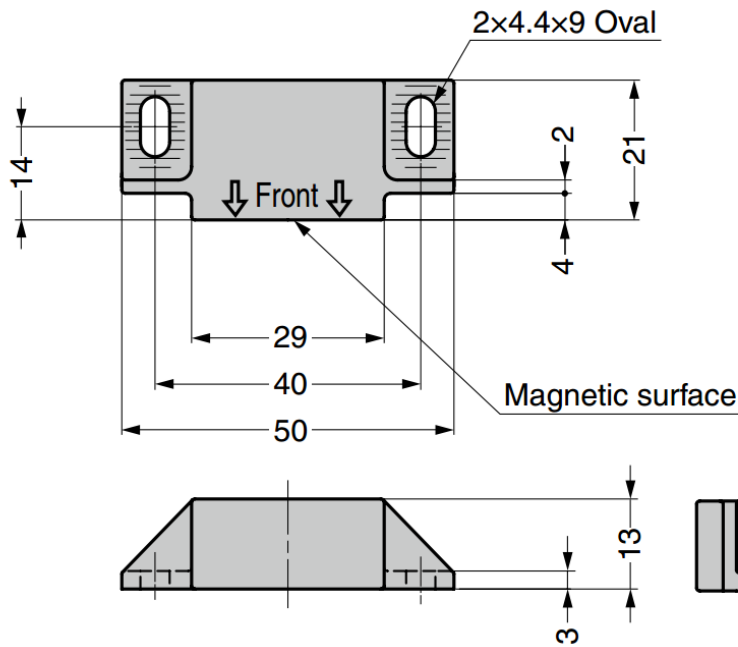
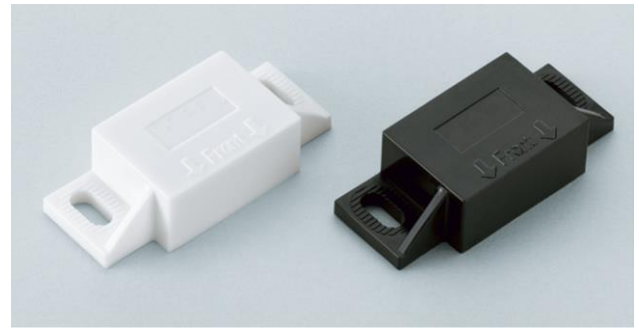
- Resin coated body prevents rusting
- Ideal for cleanroom application
- Recommended to be used with counter plate **GMC-JM49** (sold separately)
- Components for aluminium frame installation also available, contact Gripwell for assistance

Notes

- Do not use in contact with steam, hot water and water. Do not leave strongly acidic or basic detergents to avoid deteriorating.
- Max. temperature: 80°C

Recommended Screws

- M4 screw, tapping screw nominal 4 (truss or binding head, SUS)



Part Name	Material	Colour
Body	POM	White, Black
Magnet	Neodymium	-

Body

Part No.	Colour	Magnetic Force	
GMC-JM50WT	White	29.4 N	3 kg
GMC-JM50BL	Black		

Counter Plates (Sold Separately)

Part No.
GMC-JM49